



Yorkshire
Children's
Charity
We make things better



THE GREAT YORKSHIRE BUILD: BROOKLANDS 2022-2023

E: hello@yorkshirechildrenscharity.org

Registered Charity No. 1196738

THE HEADLINES

100

CHILDREN AND YOUNG PEOPLE WITH PROFOUND AND/OR MULTIPLE SEND NEEDS WHOSE LEARNING ENVIRONMENT HAS BEEN TRANSFORMED.

74

MEMBERS OF STAFF WHOSE WORKING LIVES HAVE BEEN IMPROVED.

67

CONTRACTORS AND SUPPLIERS DELIVERED THE PROJECT.

ONE NEW STATE OF THE ART
SENSORY ROOM

ONE SENSORY
OUTDOOR PLAY AREA

£705K

OF GIFT IN KIND INCREDIBLY GENEROUSLY PROVIDED.

GENERATIONS

OF FUTURE STUDENTS TO BENEFIT GOING FORWARD.

ONE NEW BESPOKE
REBOUND THERAPY ROOM

TWO INCREDIBLE EARLY YEARS'
CLASSROOMS

ONE NEW
BIKE TRACK

"...I think that thank you to everyone who has been involved in the project just does not sum it up. Thank you for coming into our lives. Thank you for making the difference. Thank you for believing in us. Thank you for investing in our children, in their futures, in our school. And thank you for making the difference to our staff and to our whole community. Nobody would have done this if you didn't come and didn't help, so thank you."

**- Fran Cracknall, Head Teacher,
Brooklands**

IN THE VOICES OF THOSE YOU'VE HELPED...

The impact at Brooklands has been **transformative**. Parents and teachers have highlighted:

- Pupils are more interested, excited, and engaged to learn.
- There has been a drastic increase in the school's ability to deliver on children's Education, Health and Care Plans (EHCP), enhancing their development, confidence and independence.
- Pupils have a happier, more enjoyable experience at school.
- Pupils are safer and more comfortable at school.
- Parent and carer trust in the school has increased.
- Teachers are re-energised, re-motivated and eager to deliver learning in a refreshed environment.



"We've gone for years with very little done here. We couldn't even have imagined that we've got the facilities that we've got now...I've seen children who I've never seen focus on an activity for the first time in their room, go to equipment, take it out and focus and do something..."

My staff are everything that you could describe. They're excited, they're re-energised. They feel invested in, they feel important, and they feel like they can now really drive on and make a massive difference to the pupils who come here."

- Fran Cracknall, Head Teacher, Brooklands

"I've been a parent at this school for the last 14 years and this has been the biggest and probably the only changes to the school we've had.

The environment it's created is like home from home for the children. I feel like it relieves that pressure that if we need to have a calmer and quieter time at home that's ok, because they've had the stimulation throughout the day."

- Parent, Brooklands



RORY

5-year-old Rory has a diagnosis of significant Global Development Delay and Epilepsy, with associated health needs. The intensity of his seizures fluctuates but can be constant, severe and result in hospitalisation, affecting all types of functioning including his ability to see, move, communicate, process, eat, drink and more. Rory moves around by crawling and really enjoys the freedom and independence this mobility gives him, also using specialist equipment for sitting, standing and walking.

As his teacher Jill tells us,

“Rory is a happy, affectionate and determined little boy with a cheeky smile and the most amazing eye lashes”!

The Brooklands Great Yorkshire Build has hugely benefitted Rory. The bi-fold doors in Blossom Classroom allow him a greater freedom to choose to be outdoors and the new equipment enriches his experiences in school. The refurbishment of the toilet area increases the staff’s ability to meet his personal care needs with the dignity he deserves. Rory loves sensory time, so the new sensory room enhances the ability of staff to progress his early development skills including increasing concentration, focus and attention, developing understanding of cause and effect and improving co-ordination and motor development. Rory also loves bouncing and using the new Rebound Therapy Room provides many benefits for him including developing his balance, co-ordination, limb strength, muscle tone, spacial and body awareness, and communication skills.

WILLIAM

William is 5 years old and has a diagnosis of SCN8A Epileptic Encephalopathy, Lennox Gastaut Syndrome and Ataxia. These genetic conditions result in severe early onset Epilepsy and causes multiple types of seizures and loss of skills. It means William has a very limited life expectancy and his ability to see, give attention, stay awake, listen, think, process information, understand, reason, remember, move, eat, drink, communicate and interact are affected. The Ataxia severely affects his co-ordination and balance and means that although William is able and likes to walk independently, he frequently falls over.

Jill, Blossom Class Teacher, says

“William is a happy, independent, resilient young boy who loves being outdoors and being active. His family, obviously, want to prioritise his happiness, having a full and good quality of life and having as much freedom and independence as his needs allow”

The new soft rubber surface in the Foundation Playground means William can safely have more time out of his chair and more independence in his play and learning. The new Rebound Therapy Room gives William new and valuable freedom of movement experiences. Bouncing aids the development and maintenance of his balance, co-ordination, limb strength and muscle tone. The new sensory room gives William enriching and stimulating experiences when he is going through periods of poorer health. When he is well it allows staff to work on the development of William’s motor, socialisation and focusing skills.





IN YOUR OWN WORDS

"I'm a Mum myself, a Mum of a child with special educational needs as well, and when I saw the state of the facilities here before, it broke my heart. You would not want your children to ever be in that sort of standard of setting. Everybody here works so hard for the children and gives so much of their time. Now you look around at what's been created and what's been given back by everybody to this school and it's just... well you'd love to drop your kids off here now."

– Natalie Bennett, Rex Procter and Partners

"It's inspirational really, to see what a difference we can make as a company and as people when you come to places like this and see the change it's made and the impact it has not just on the students but also on the teachers. The morale lift it has on them. You can't put a price on that."

– Kevin Murphy, Morley Glass & Glazing





"As a society and also as businesses, we have a responsibility to give to those people who are in most need. The funding is not available from the government and we know that there's a cost-of-living crisis. We've got to do more in business. We've all got to join together, and it is amazing what you can actually do when you do come together."

- Lee Powell, GMI Construction

"Regardless of people's backgrounds or abilities, everyone deserves the best opportunities in life. The teaching environment has to be absolutely amazing and the best it can be."

- Craig Mewse, Bowman Riley Architects

"The beauty of Yorkshire Children's Charity and the way that they operate enables any business, whether they're large or small, to not only help but to also benefit their business and promote their business in a positive manner. If you can help then you should help. I think it's incumbent upon us to do so."

- Tom Gilman, McLaren Property

"Working with Yorkshire Children's Charity personally and as a business, we get so much more back from it than what we actually put in."

- Jessica Owens, Morley Glass & Glazing

"The construction industry over the last few years has taken a hard hit but as a company we feel it's important to get involved in these kinds of projects and the benefit it gives the children and the teachers is worth the time. We were able to contact a lot of our subcontractors and suppliers who were really willing to get involved."

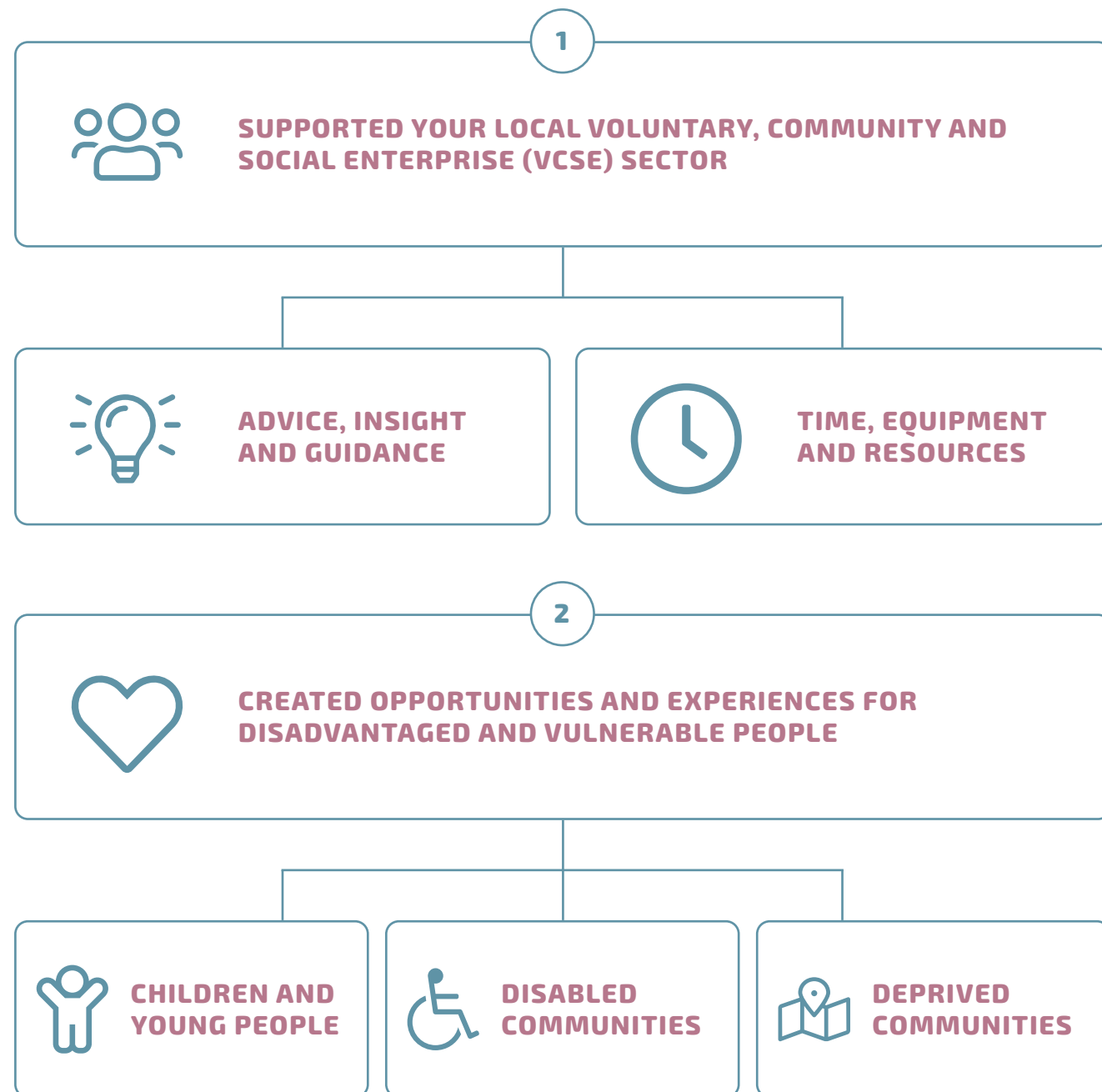
- Ben Whitlock Stainforth Construction



GENERATING SOCIAL IMPACT

The Yorkshire Property Sector is full to the brim of incredibly generous people. It would be easy to ignore a plea for help like ours, but giving back to your communities is part of the DNA of who you are and how you operate. We are incredibly proud that the Great Yorkshire Build can play such a significant role in this, allowing you to have a **tangible**, **measurable** and **meaningful** impact on the causes that matter to you.

Through The Great Yorkshire Build, you have...



THANK YOU SO MUCH

